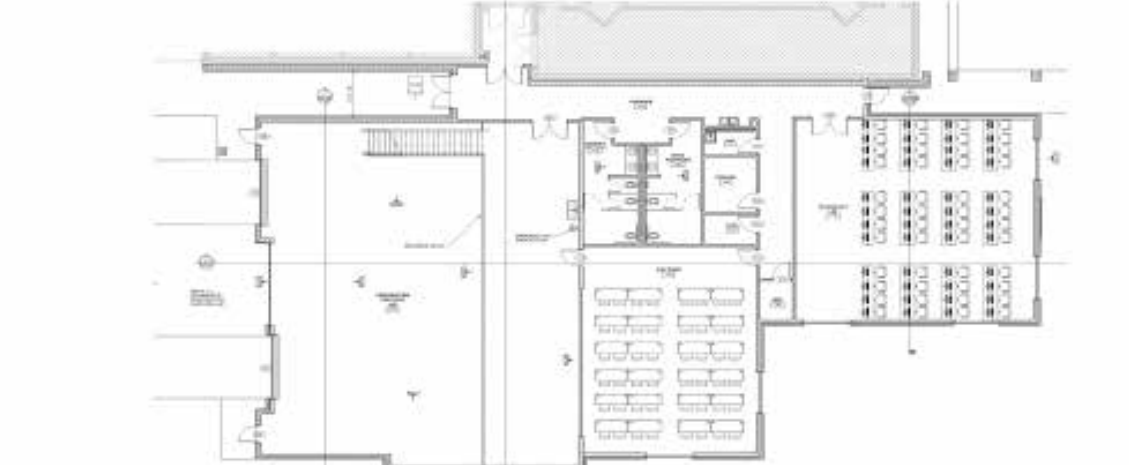


LEGEND	
	1 HOUR RATED WALL - UL U 907
	3 HOUR RATED WALL - UL U 905
F.E.C.	FIRE EXTINGUISHER IN CABINET
PARTITION TYPE LEGEND	
	WALL TYPE

GENERAL NOTES	
1. REFER TO ROOM FINISH SCHEDULE AND INTERIOR ELEVATIONS FOR ADDITIONAL FINISHES NOT SHOWN ON THE LS SHEETS. 2. REFER TO BUILDING SECTIONS SHEETS FOR ADDITIONAL CONSTRUCTION REQUIREMENTS NOT SHOWN ON THE LS SHEETS. 3. REFER TO STRUCTURAL SHEETS FOR WALLS/PARTITIONS REQUIRING HEAVIER GAUGE STUDS AND/OR CLOSE STUD SPACING THAN INDICATED ON THE LS SHEETS. 4. THE CONTRACTOR SHALL NOTIFY THE ARCHITECT OF ANY CONDITIONS, WHICH CONFLICT WITH THE PROPER INSTALLATION OF SMOKE PARTITIONS, FIRE WALLS AND FIRE BARRIERS. SUCH NOTIFICATION SHALL BE PROVIDED, PRIOR TO INSTALLATION AND WORK ON THE AFFECTED WALLS/PARTITIONS SHALL BE SUSPENDED, UNTIL THE CONFLICT HAS BEEN RESOLVED. ANY ADDITIONAL WORK REQUIRED, AS A RESULT OF THE CONTRACTOR FAILING TO PROVIDE SAID NOTIFICATION SHALL BE PERFORMED, AT THE CONTRACTORS EXPENSE, WITHOUT CHANGE ORDER.	
DESIGN NOTES	
1. 1ST FLOOR: A. LIFE SAFETY CODE 2012 INFORMATION OCCUPANCY TOTAL SQUARE FOOTAGE AUTOMATIC SPRINKLER SYSTEM FIRE ALARM SYSTEM TRAVEL DISTANCE COMMON PATH OF TRAVEL DEAD END CORRIDOR LIMIT NUMBER OF EXITS OCCUPANT LOAD TYPE OF CONSTRUCTION B. 2021 INTERNATIONAL BUILDING CODE INFORMATION OCCUPANCY TOTAL SQUARE FOOTAGE AUTOMATIC SPRINKLER SYSTEM FIRE ALARM SYSTEM TRAVEL DISTANCE COMMON PATH OF TRAVEL DEAD END CORRIDOR LIMIT NUMBER OF EXITS OCCUPANT LOAD TYPE OF CONSTRUCTION	
2. ALL NEW CONSTRUCTION SHALL COMPLY WITH THE 2021 INTERNATIONAL BUILDING CODE, AND ALL LOCAL AND STATE CODES WHICH APPLY FOR THIS TYPE CONSTRUCTION. 3. THIS INSTALLATION SHALL CONFORM WITH THE 2010 ADA-AG FOR HANDICAP ACCESSIBILITY. 4. ALL ELECTRICAL WORK SHALL COMPLY WITH 2021 N.E.C. AND ALL STATE CODES. 5. ALL GLASS WITHIN 4' OF EXITS SHALL BE SAFETY GLAZED. 6. ALL EXTERIOR EXIT DOORS SHALL HAVE LANDINGS OUTSIDE AT DOOR OPENING ELEVATION. 7. RAMPS FROM LANDINGS TO WALKS AND HANDICAP PARKING AREAS SHALL HAVE A MAXIMUM SLOPE OF 1:12 & CURB RAMP SIDE FLARES SHALL HAVE A 1:10 MAX SLOPE. 8. EXIT DOORS SHALL NOT REQUIRE THE USE OF A KEY TO OPEN IN THE DIRECTION OF EGRESS.	

Building Occupant Load Calculation per IBC Section 1004					
Name	Function of Area	Area	Area Per Occ.	Area Type	Occupant Load
FINISH FLOOR					
CONSTRUCTION PRACTICES LAB	Educational Shops & other Vocational	3,085.2 SF	50	Net	62
CORRIDOR	Business Areas	862.7 SF	100	Gross	9
DATA	Accessory Storage Areas, Mechanical Equipment Rooms	83.6 SF	300	Gross	1
ELECTRICAL	Accessory Storage Areas, Mechanical Equipment Rooms	53.0 SF	300	Gross	1
FLEX ROOM	Educational Classroom Area	1,056.5 SF	20	Net	53
JAN.	Accessory Storage Areas, Mechanical Equipment Rooms	62.3 SF	300	Gross	1
MEN'S RESTROOM	Business Areas	223.5 SF	100	Gross	3
STORAGE	Accessory Storage Areas, Mechanical Equipment Rooms	84.8 SF	300	Gross	1
STORAGE	Accessory Storage Areas, Mechanical Equipment Rooms	105.3 SF	300	Gross	1
TECHNOLOGY LAB	Educational Classroom Area	1,601.8 SF	20	Net	81
WOMEN'S RESTROOM	Business Areas	228.0 SF	100	Gross	3
MEZZANINE F.F.		7,446.7 SF			216
MEZZANINE	Educational Shops & other Vocational	266.5 SF	50	Net	6
Total Building Area		7,713.2 SF			222

**ULM SCHOOL OF CONSTRUCTION PRACTICE**  
**LAB BUILDING**  
507 Filhiol Ave., Monroe, LA 71203  
Building Code: Louisiana State Uniform Construction Code/2021 IBC, 2015 NFPA 101



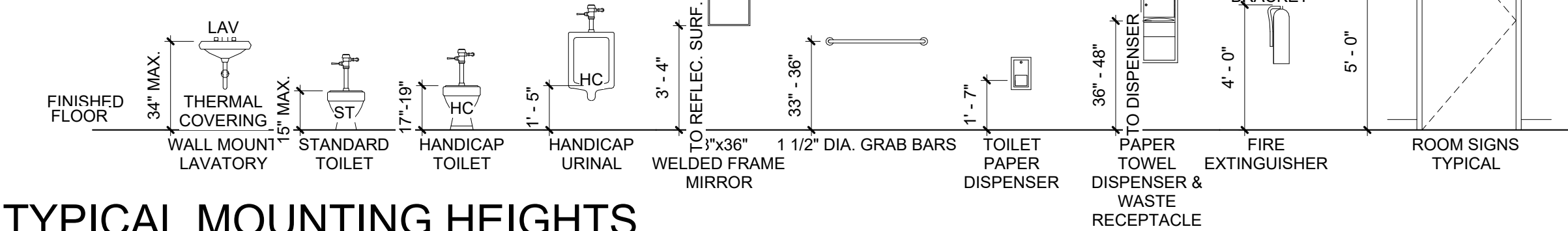
IBC 2021		NFPA 101
Use and Occupancy	B	Business
Minimum Construction Type	V-B (EXISTING BLDG III-B)	V-000 (EXISTING BLDG III-000)
Other Educational Laboratories	Section 4	
Separation from other nonlaboratory areas	428.3.1, Table 428.3	
Standby power	not required	
Ventilation	428.3.6	
Automatic Sprinkler System	required	
Max. quantity of hazardous materials	100% allowed by Tables 907.1(1) and 907.1(4)	
General Building Heights and Areas	Section 5	
Allowable Building Height - Sprinklered	40	
Actual Building Height	31	
Allowable Stories above Grade - Sprinklered	2	
Actual Stories above Grade	1	
Allowable Building Area - Not Sprinklered	9,000	
Actual Building Area	8,354	
Types of Construction	Section 6	
Fire Resistance Rating	Table 601	NFPA 220 Table 4.1.1
Primary Structural Frame	0	
Bearing walls - exterior	0	
Bearing walls - interior	0	
Interior Nonbearing walls and partitions	0	
Floor construction and associated secondary members	0	
Roof construction and associated secondary members	0	

IBC 2021		NFPA 101
Fire and Smoke Protection Features	Section 7	Table 705.5
Fire Resistance Rating for Exterior Walls	Table 705.5	NFPA 2000 Table 7.3.3.1
Fire Separation Distance = X	6'-0"	
Fire walls	Table 705.4	
Fire barriers	Table 705.4	
Fire partitions	Table 705.4	
Smoke partition	Table 705.4	
Shaft enclosures	Table 705.4	
Interior Finishes	Section 8	
Interior Finishes	Table 803.1.1	8.3.3.1
Interior exit stairways and ramps and exit passageways	Table 803.1.1	8.3.3.1
Corridors and enclosure for exit access stairways and ramps	Table 803.1.1	8.3.3.1
Rooms and enclosed spaces	Table 803.1.1	8.3.3.1
Fire Protection Systems	Section 9	
Automatic Sprinkler System	Table 903.1	9.3.1
Stairways	Table 903.1	9.3.1
Portable Fire Extinguishers	Table 903.1	9.3.1
Fire Alarm System	Table 907.2	9.7.2
Emergency voice/alarm communication systems	Table 907.2	9.7.2
Voice Alarms	Table 907.2	9.7.2
Fire Alarm Zones	Table 907.2	9.7.2
Smoke Compartments	Table 907.2	9.7.2
Fire Command Center	Table 907.2	9.7.2
Fire Pump Room	Table 907.2	9.7.2
Means of Egress	Section 10	
MAXIMUM FLOOR AREA ALLOWANCES PER OCCUPANT	Table 1004.5	Table 7.3.3.2
Business	Table 1004.5	Table 7.3.3.2
Business (lab)	Table 1004.5	Table 7.3.3.2
Business (classroom)	Table 1004.5	Table 7.3.3.2
Business (mechanical)	Table 1004.5	Table 7.3.3.2
Stairs width per person	Table 1004.5	Table 7.3.3.2
Stair treads	Table 1004.5	Table 7.3.3.2

IBC 2021		NFPA 101
Stair risers	Table 1001.2	Table 7.2.1.1.1(a)
Other egress elements width per person	Table 1001.2	Table 7.2.1.1.1(a)
Max. Common path of egress travel	Table 1006.2.1	Table 7.2.1.1.1(a)
Min. Common path of egress travel from mezzanine	Table 1006.2.1	Table 7.2.1.1.1(a)
Minimum exits	Table 1006.2.1	Table 7.2.1.1.1(a)
Distance between exits	Table 1006.2.1	Table 7.2.1.1.1(a)
Exit Discharge Through Interior Building Areas	Table 1006.2.1	Table 7.2.1.1.1(a)
Doors	Table 1006.2.1	Table 7.2.1.1.1(a)
Swing in direction of egress	Table 1006.2.1	Table 7.2.1.1.1(a)
Panic Hardware	Table 1006.2.1	Table 7.2.1.1.1(a)
Materials	Table 1006.2.1	Table 7.2.1.1.1(a)
Guards	Table 1006.2.1	Table 7.2.1.1.1(a)
Maximum Exit Travel Distance	Table 1006.2.1	Table 7.2.1.1.1(a)
Corridors	Table 1006.2.1	Table 7.2.1.1.1(a)
Dead Ends Maximum Length	Table 1006.2.1	Table 7.2.1.1.1(a)

Plumbing Systems	
Minimum Requirements	Table 2902.1
Water Closets	Table 2902.1
Men	Table 2902.1
Women	Table 2902.1
Urinals	Table 2902.1
Handicapped	Table 2902.1
Men	Table 2902.1
Women	Table 2902.1
Drinking Fountains	Table 2902.1
Service Sink	Table 2902.1

PLUMBING FIXTURES	
Occupants	Table 2902.1
Men	Table 2902.1
Women	Table 2902.1
Urinals	Table 2902.1
Handicapped	Table 2902.1
Men	Table 2902.1
Women	Table 2902.1
Drinking Fountains	Table 2902.1
Service Sink	Table 2902.1



TBA STUDIO  
ARCHITECTURE  
103 Cypress Street  
West Monroe, LA 71291  
Tel. 318.340.1550  
Fax. 318.998.1315  
www.tbastudio.com

TBA



SCHOOL OF CONSTRUCTION PRACTICE  
LAB BUILDING, UNIVERSITY OF  
LOUISIANA MONROE  
507 Filhiol Ave, Monroe, LA 71203

DRAWING REVISIONS

No.	Description	Date

DRAWN BY: KB, MU  
CHECKED BY: CW  
SHEET

LS1.01

Date: NOV 2025  
Project No.: 24-0059  
File Name:

DESCRIPTION:  
LIFE SAFETY PLAN